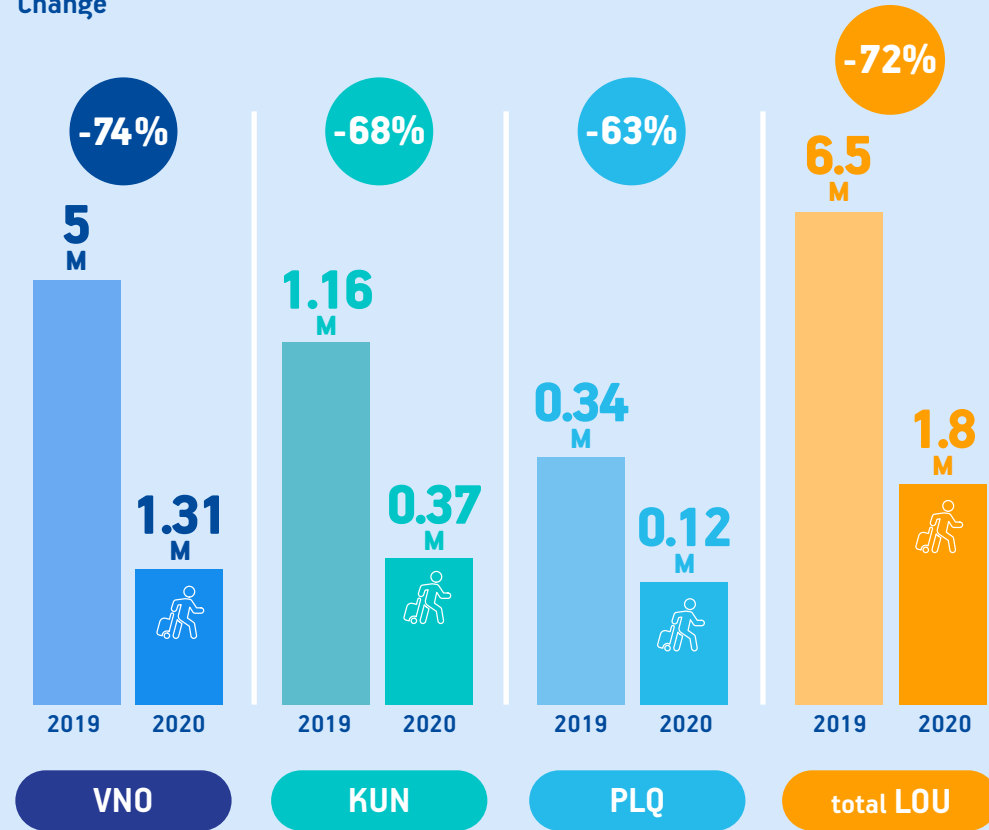


# LOU 2020 AVIATION STATISTICS OVERVIEW

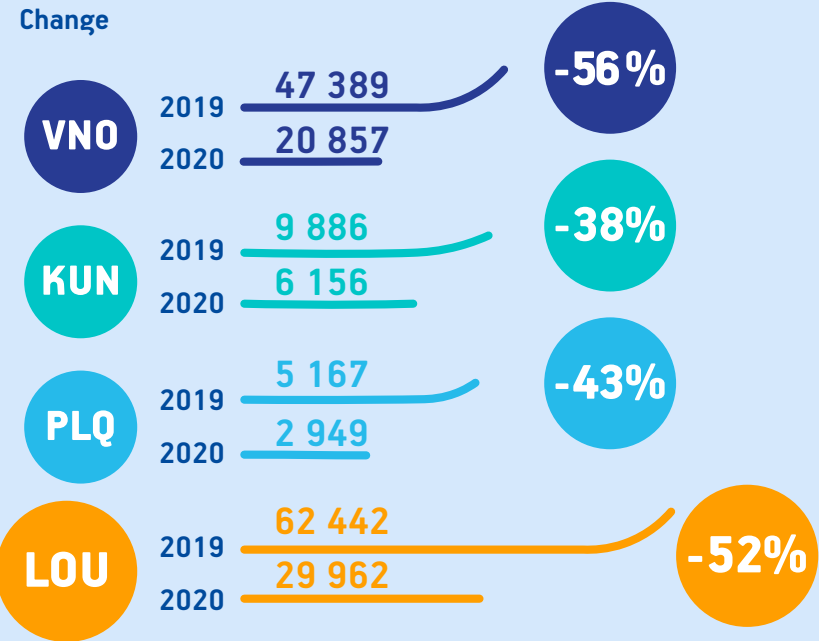
## PASSENGERS, M

Change



## FLIGHTS

Change



## CARGO, K, T

Change



## SEATS OFFERED, M

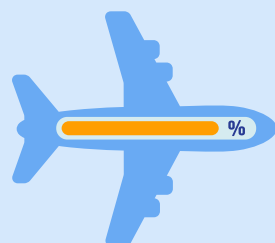


2020  
Full service carriers\*  
Low cost carriers\*\*

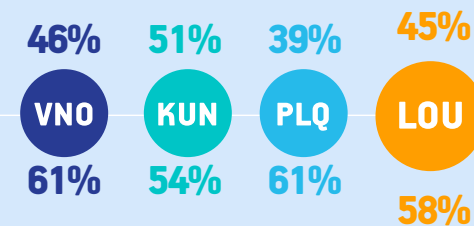


\* - Airlines operating scheduled flights excluding low-cost carriers  
\*\* - Ryanair, Wizz Air, Norwegian Air Shuttle

## AVERAGE LOAD FACTOR

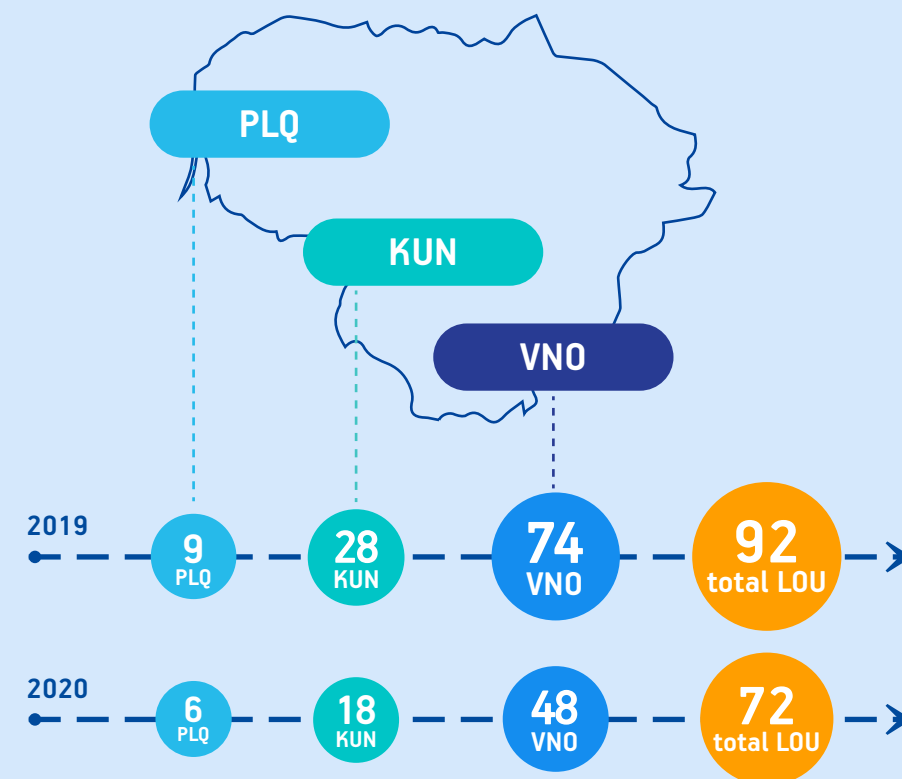


2020  
Full service carriers\*  
Low cost carriers\*\*



\* - Airlines operating scheduled flights excluding low-cost carriers  
\*\* - Ryanair, Wizz Air, Norwegian Air Shuttle

## NUMBER OF ROUTES



## TOP 10 COUNTRIES BY PASSENGERS

DESTINATIONS	PASSENGER SHARE
1. UNITED KINGDOM	21%
2. NORWAY	10%
3. GERMANY	9%
4. DENMARK	5%
5. LATVIA	5%
6. UKRAINE	4%
7. IRELAND	4%
8. ITALY	4%
9. POLAND	4%
10. NETHERLANDS	4%

## TOP 10 DESTINATIONS BY PASSENGERS

DESTINATIONS	PASSENGER SHARE
1. London LTN	10%
2. Riga RIX	5%
3. Oslo OSL	5%
4. London STN	5%
5. Copenhagen CPH	5%
6. Warsaw WAW	4%
7. Frankfurt FRA	4%
8. Dublin DUB	4%
9. Kyiv KBP	2%
10. Eindhoven EIN	2%

## TOP 10 AIRLINES BY PASSENGERS

RYANAIR	31%	SCANDINAVIAN AIRLINES	4%
WIZZ AIR	24%	GETJET AIRLINES	4%
AIR BALTIC	11%	LUFTHANSA	4%
LOT POLISH AIRLINES	5%	AEROFLOT	2%
NORWEGIAN AIR SHUTTLE	4%	TURKISH AIRLINES	2%