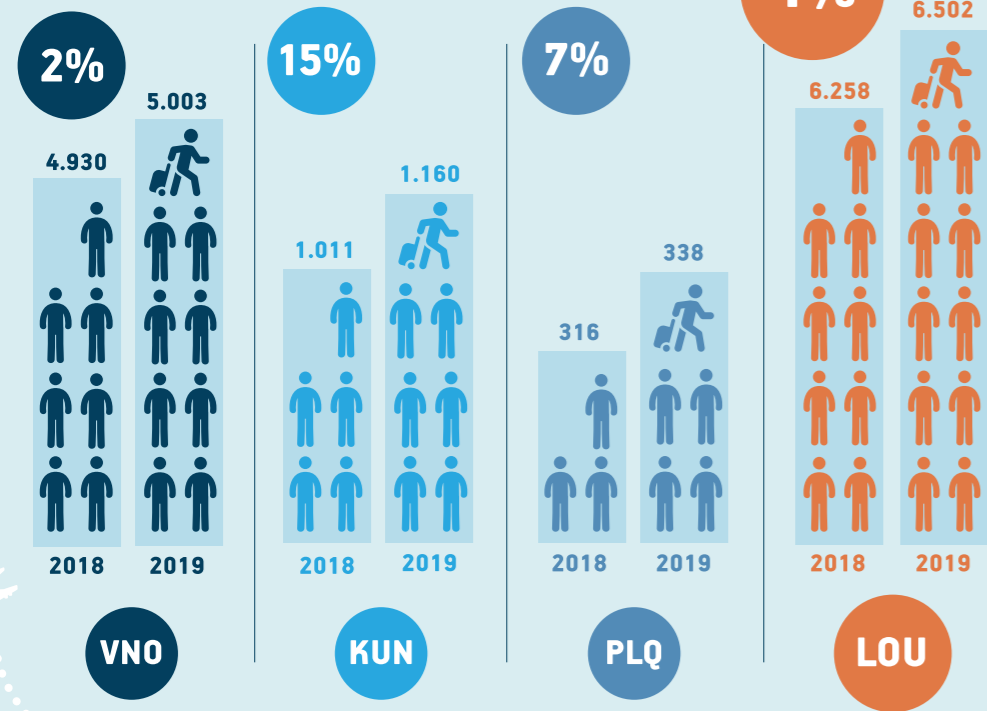


LOU 2019 AVIATION STATISTICS OVERVIEW

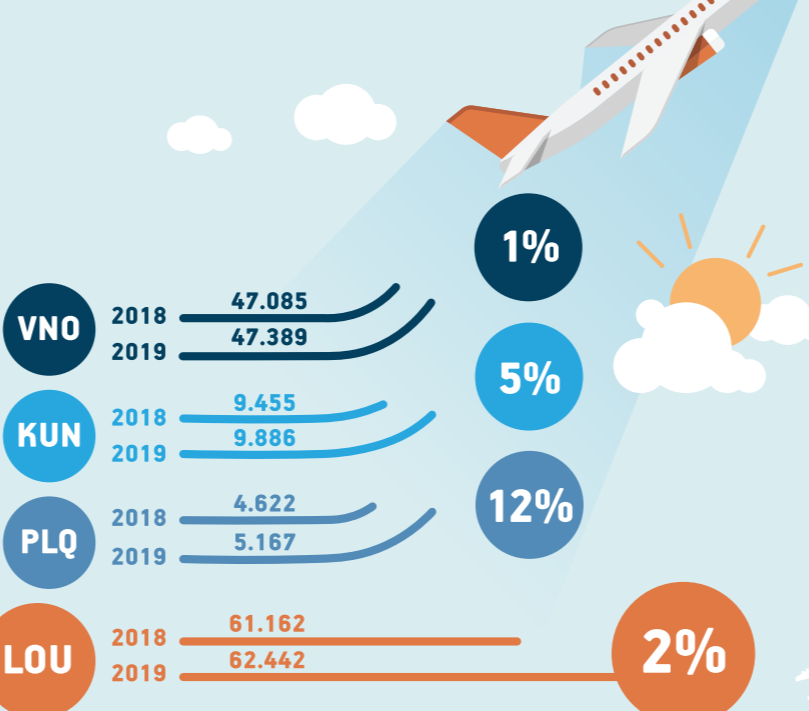
LITHUANIAN AIRPORTS

VNO KUN PLQ

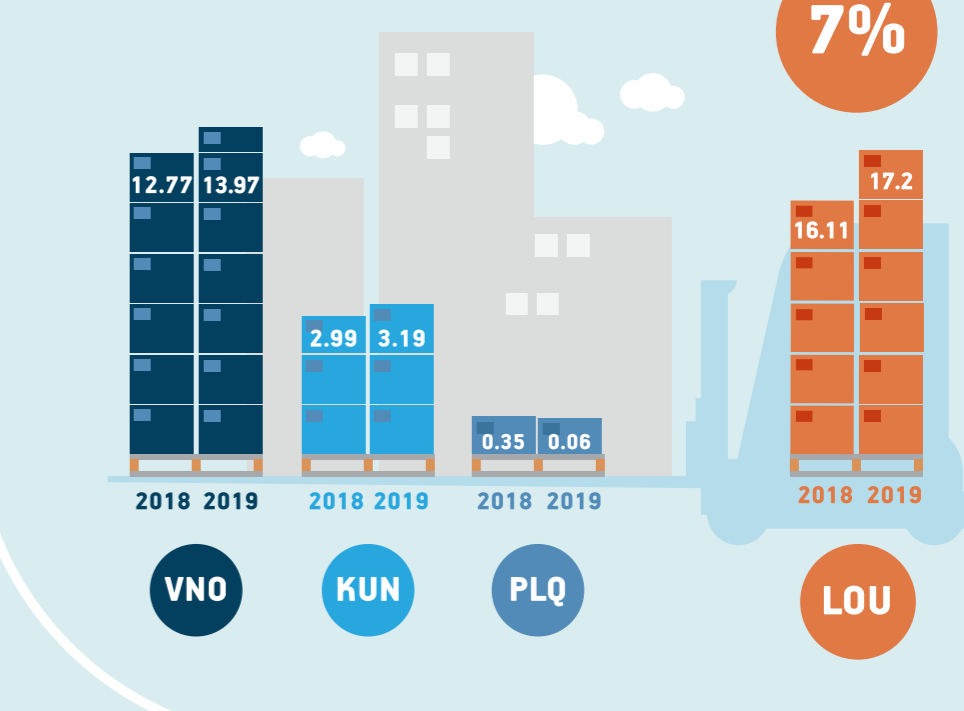
PASSENGERS, K CHANGE



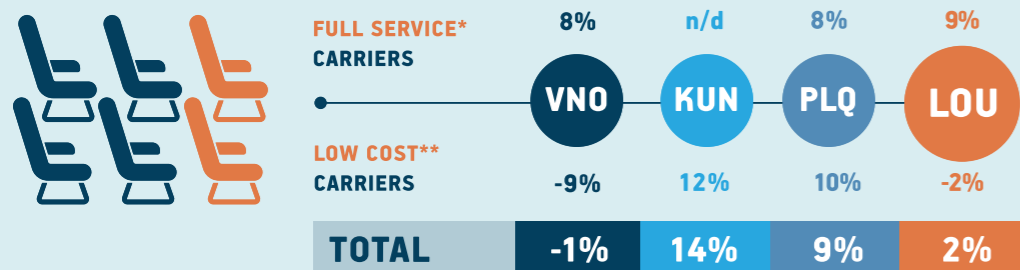
FLIGHTS CHANGE



CARGO, KT CHANGE

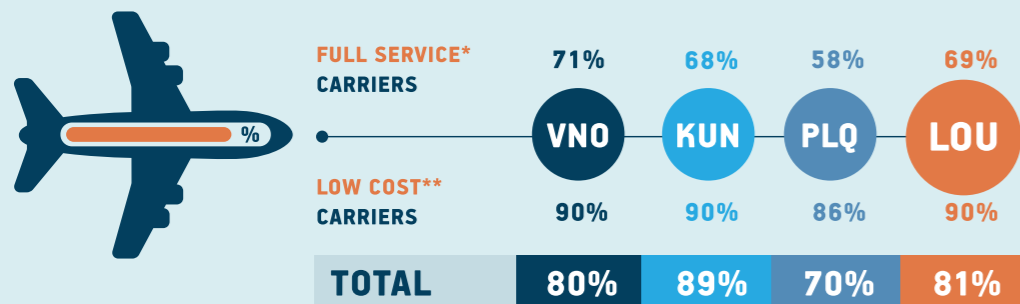


CHANGE IN SEATS OFFERED



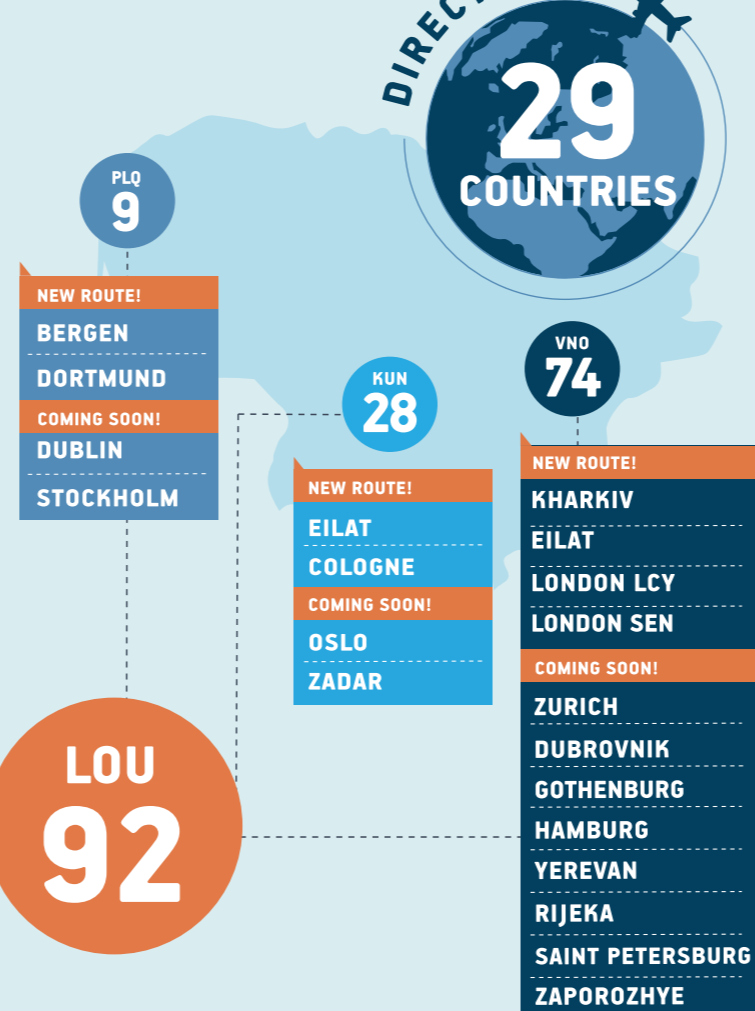
* - Airlines operating scheduled flights excluding low-cost carriers
** - Ryanair, Wizz Air, Norwegian Air Shuttle

AVERAGE LOAD FACTOR



* - Airlines operating scheduled flights excluding low-cost carriers
** - Ryanair, Wizz Air, Norwegian Air Shuttle

NUMBER OF ROUTES



TOP 10 COUNTRIES BY PASSENGERS

1. UNITED KINGDOM	20%
2. GERMANY	10%
3. NORWAY	9%
4. ITALY	7%
5. DENMARK	6%
6. UKRAINE	6%
7. LATVIA	5%
8. POLAND	5%
9. SPAIN	4%
10. IRELAND	3%

TOP 10 DESTINATIONS BY PASSENGERS

1. LONDON LTN	10%
2. COPENHAGEN CPH	5%
3. RIGA RIX	5%
4. WARSAW WAW	5%
5. LONDON STN	4%
6. KYIV KBP	4%
7. FRANKFURT FRA	4%
8. OSLO OSL	4%
9. STOCKHOLM ARN	3%
10. MOSCOW SVO	3%

TOP 10 AIRLINES BY PASSENGERS

AIRLINE	SHARE	AIRLINE	SHARE
1 RYANAIR	33%	6 SCANDINAVIAN AIRLINES	4%
2 WIZZ AIR	22%	7 LUFTHANSA	4%
3 AIR BALTIC	9%	8 UKRAINE INTERNATIONAL AIRLINES	3%
4 GETJET AIRLINES	8%	9 NORWEGIAN AIR SHUTTLE	3%
5 LOT POLISH AIRLINES	6%	10 AEROFLOT	3%